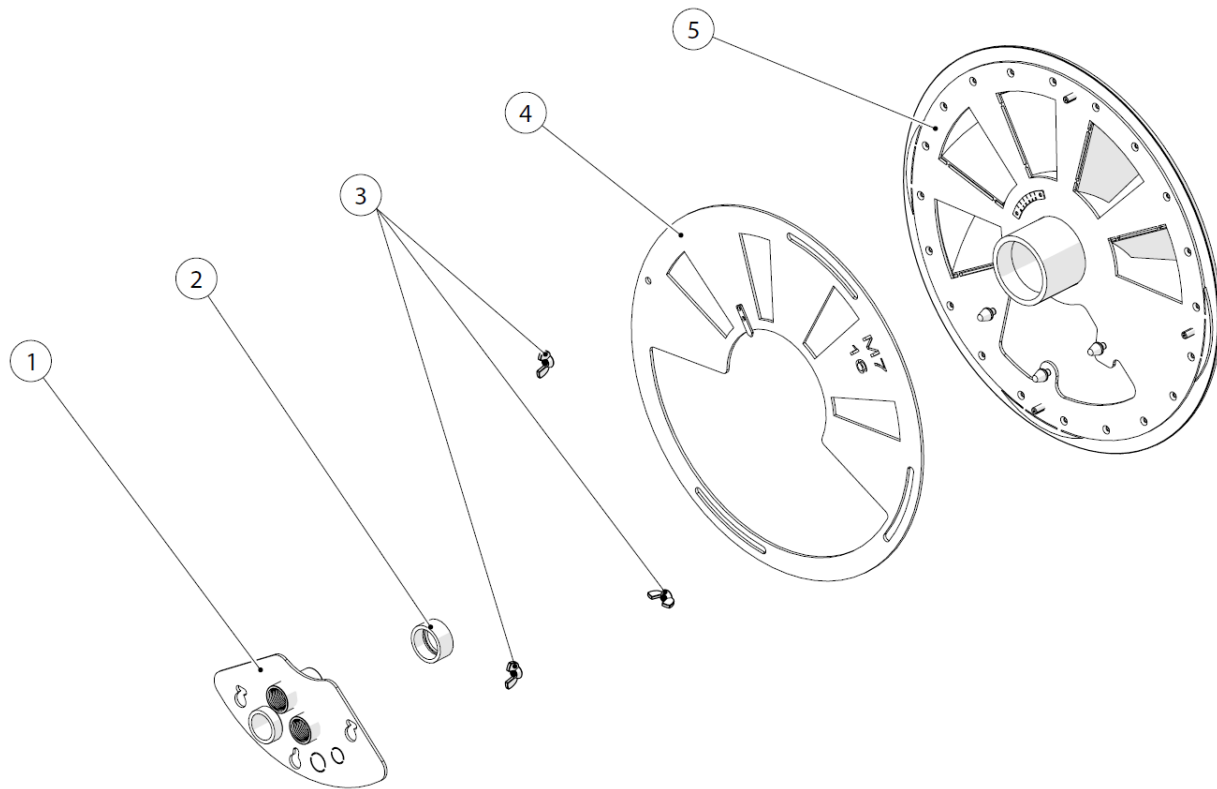




PF M7 HIGH-PERFORMANCE SECONDARY AIR CONTROL PLATE



AIR PLATE ASSEMBLY

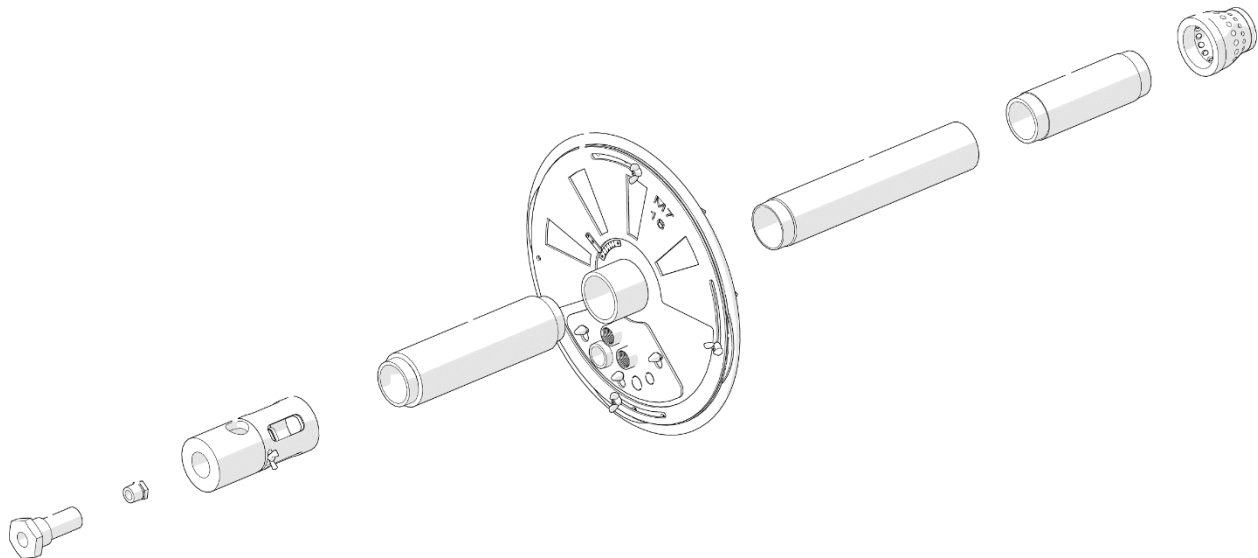


NUMBER	QTY	DESCRIPTION
1	1	Removable Pilot Mount
2	1	SacSight™ Viewing Port
3	3	Air Plate Shutter Wingnuts
4	1	Air Plate Shutter
5	1	Air Plate with Flexible AirSeal™ / Fiber Sleeve

SECONDARY AIR CONTROL – MECHANICAL INSTALLATION

The M7 Secondary Air Control comes fully assembled out of the box and is ready for accommodating the M7 Burner.

The image below shows the orientation for assembly with an M7 burner.



Full assembly, installation, and startup of the M7 Burner and Secondary Air Controller can be found on the M7 Burner documentation PROFIRE M7 HIGH-PERFORMANCE BURNER.

RECOMMENDATION

In order to achieve safety as well as the maximum efficiency of the burner and appliance, Profire strongly recommends startup and commissioning is completed by a qualified and experienced burner technician. Please contact a Profire Combustion Expert at 855.776.3473 to schedule a technician.

MAINTENANCE

Although the M7 Secondary Air Control is almost maintenance-free, regular inspection and cleaning are highly recommended. Below are a few things to look for when inspecting the Secondary Air Control.

- Inspect for visible damage.
- Ensure Air Plate is clean and free form debris.
- Ensure all components of the air plate are in good working order.
- Inspect for sever heat damage that can be caused by improper combustion.